

TREE STATISTICS

TREE CANOPY LOSS

urban & community tree cover loss is 175,000 acres worth of trees, or approximately 36 million trees per year.

IN 2050

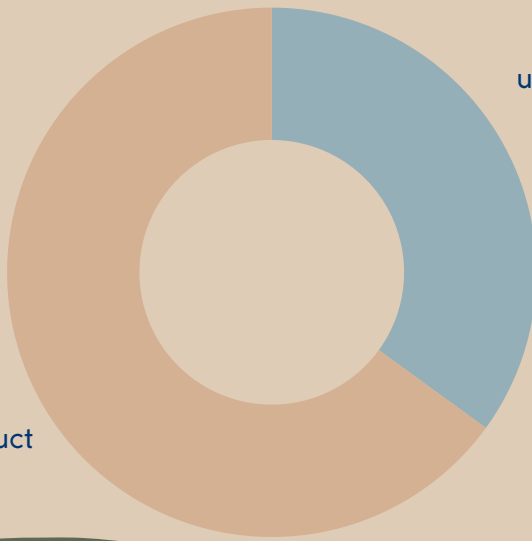
it is expected that if we continue cutting down trees at the rate we are now, we will have 2.5 trillion trees remaining.

We have approximately 3.04 trillion trees on earth right now

TREES CUT DOWN USED FOR...

1 billion trees worth of paper are **thrown away** per year

non-paper product
65%



used for paper
35%

1.9 billion trees are planted per year

15 billion trees are **cut down** per year

ON AVERAGE,

a tree absorbs between 10 and 40 kilograms of CO₂ per year

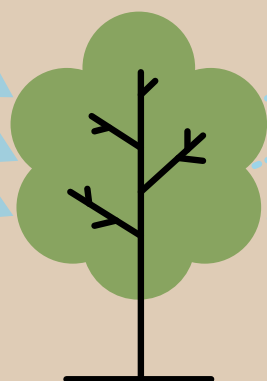
the average person breathes about 255kg worth of CO₂ per year

CO₂ is a gas (a greenhouse gas) that will absorb and then radiate heat, which warms the planet. the warming of the planet is a direct cause to climate change, and can be linked to destruction and fatality across the globe

HOW MUCH FOREST IS LEFT ON EARTH?

Forests cover over four billion hectares of the Earth's landmass, around 31 percent of total land area. As of 2020, worldwide forest area measured some 4.06 billion hectares, down from approximately 4.24 billion hectares in 1990.

CO₂



O₂

CO₂ ACCOUNTS FOR
approximately 76% of total greenhouse gas emissions

WHEN TREES ARE CUT DOWN

If forests are cleared, or even disturbed, they release carbon dioxide and other greenhouse gases. Forest loss and damage is the cause of around 10% of global warming

trees and rainforests produce approximately 28% of the world's oxygen



FRESH VOICES
for clean air

